

- ✓ Reduce Process Time
- ✓ Improve Productivity
- ✓ Ensure Compliance
- ✓ Increase Efficiency
- ✓ Cut Costs

Powered By
AutoStore™



**Capture, Process and Distribution Technology For
Fast & Easy Document Management, Storage & Retrieval**



www.nsius.com



Notable Solutions, Inc.™
600 Jefferson Plaza, Suite 500 . Rockville, MD 20852
phone: 1.240.683.8400 . fax: 1.240.683.8420



Improve your productivity and facilitate knowledge sharing by automating your document capture and management process

AutoStore will:

- Improve productivity
- Automate the integration of documents into workflows thereby reducing manual steps
- Improve accuracy
- Reduce the time required to process and archive documents
- Reduce the number of staff required to process documents
- Minimize shipping costs
- Ensure regulatory compliance
- Increase information sharing and collaboration

In today's business environment, documents come in all forms and shapes, with many of them still in paper format. AutoStore is uniquely designed to capture, index and route documents regardless of file format or the source of content.

One platform for all of your capture and compliance needs.

Knowledge workers in today's business environment not only have to worry about their own tasks, they also need to worry about how to address corporate mandates and compliance issues.

Q: How do you deal with all of these rules and directives?

A: With AutoStore you don't have to.

AutoStore manages all of the capture workflow

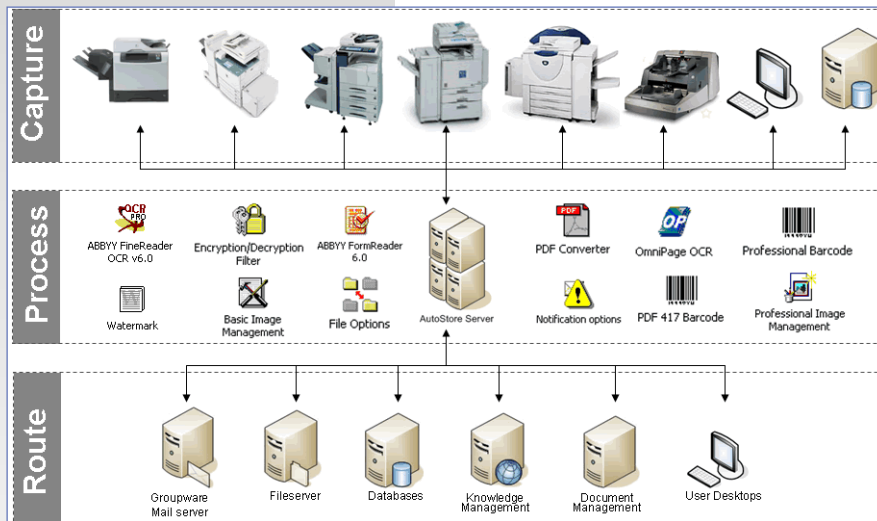
rules and processes, which are set up by the IT administrator. All you need to do is click the right button on the copier, or select the right workflow from within your Microsoft Office environment.

A single click on your side can start the most complex workflows and compliance rules.

Typically the major costs associated with document processing are:

- Manual processing of documents by a large staff
- High shipping costs
- Lengthy processing time
- High error rates in processing

AutoStore Addresses All Of Them



AutoStore comes with over 20 Free Connectors, Including:

ApplicationXtender, Captaris Alchemy, Documentum DM5, Domino.Doc, Folder Store, Fortis FileMagic, FTP Store, Hummingbird, Interwoven / iManage, IXOS / OpenText Enterprise Archive, Lotus Notes/Domino, Lan Fax, Microsoft Exchange, Send to ODBC Database, OnBase, Open Text LiveLink, Send To PC, Microsoft SharePoint, SMTP Email Sending / MS Exchange Mailbox, TRIM Context/Captura, VB/Java Script, Xerox DocuShare

Capture → Process → Route

- Capture, index and route documents regardless of format or source of the content
- Share hardcopy information in seconds - AutoStore will turn your hard copy documents into digital information and send it to the desired destination. Whether it's e-mail addresses, faxes, printers, data base systems or simply a folder on your desktop
- Turn your documents into multiple file formats including PDFs, TIFFs, Word or Excel
- Ensure the accuracy of your scanned documents with AutoStore's powerful image processing tools and OCR (Optical Character Recognition) engines
- Convert scanned documents into a text searchable PDF
- Turn your documents into electronic knowledge that is immediately available and easily shared

Why do you need AutoStore?

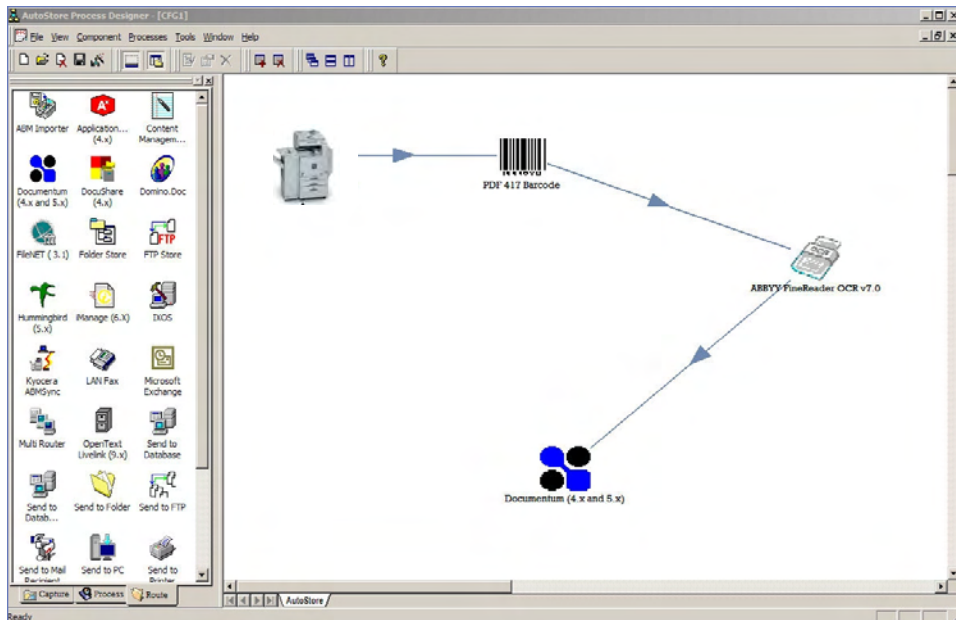
Think of AutoStore as the *content gateway* for your organization. Documents, emails, faxes, and all other types of content that pass through this gateway are automatically indexed, categorized and distributed to the right destination at the right time.

You need AutoStore:

1. If you wish to enhance the functionality of a scan enabled device (copier)- e.g: **sent email functionality.**
When a user sends an email from an MFP it will automatically be stored in their "SENT" Outlook folder.
2. If you want to enable one touch scanning into a document management system such as MS SharePoint, Interwoven, Documentum and others.
3. If you need to capture different types of content (such as Word/Excel files) and have those files transformed into searchable PDF format without using additional client software at each desktop.
4. If you are in a heavily regulated industry that is paper and process intensive such as:
 - Legal
 - Accounting / Finance
 - Healthcare
 - Government

Create a competitive advantage

- Improve customer service
- Improve compliance and risk management
- Reduce error rates in document processing



AutoStore is a dream product for IT administrators. They can use the AutoStore Workflow Process Designer to easily deploy most complex capture workflows within minutes.



AutoStore Is:

- Cost effective
- Easy to use and implement
- Built with an open architecture
- Easily customizable
- Centrally managed to give you better control
- Seamlessly integrated with a broad array of 3rd party applications and solutions

Benefits

- Knowledge sharing – Increase information sharing and collaboration
- Productivity – Improve productivity and efficiency
- Consistency – Create consistent document capture solutions



Product differentiators:

- Works with all properly enabled MFPs/Scanners
- Competitively priced
- Enables distributed capture with centralized management
- Price not contingent on page volume or number of users (No page count)
- Plug and play modules
- Free 30 day evaluation download
- Scalable and clusterable solution
- Open platform – ability to create custom modules in Java or VB.

For more information on AutoStore, call us at 1+240.683.8400 or visit our website at: www.nsius.com



Copyright © 2005 Notable Solutions Inc. All rights reserved. AutoStore is a registered trademark of NSI, Inc. All other product names and logos are trade and service marks of their respective companies. All specifications are subject to change without notice.

Features

Scanner and Network Imaging

AutoStore supports any TWAIN scanner as well as digital copiers and MFPs with embedded scanning features such as HP, Kyocera, Xerox, RICOH, Sharp, Canon and others.

No Hardware Key, No Page Count

No hardware key, no dongle, no dongle renewal, no incompatibility of dongles across releases which means no headache, no on-going cost, and no worries.

Scalable Enterprise Application

AutoStore provides the ability to perform load balancing and distribution of documents across multiple AutoStore servers so

organizations can fully benefit from a uniform load distribution of document processing.

Custom Module

Use components already developed or choose to develop your own using an open architecture build using the Microsoft development platform.

Distributed Network Architecture (DNA)

AutoStore DNA connects imaging devices on remote locations to central processing sites using bandwidth friendly protocols such as FTP, SMTP and more.

What is new in AutoStore 4.5?

FTP Poll

- Allows pulling files from any remote FTP site with advanced scheduling (day and time)
- Supports flow control
- Supports server to server communication (WAN)
- Allows retrieval of files from devices supporting FTP

Microsoft Office Integration

- Integrates itself directly into Microsoft Office applications
- Allows capturing emails from Outlook
- Fully integrated into Active Directory for security
- Captures and archives documents directly from MS Word, MS Excel, PowerPoint and more

New Enhanced OCR Feature

- Fast, rules-based routing of Office files into any supported business applications
- Server-based processing of the captured files
- Faster and more accurate data extraction engine
- Comprehensive zone OCR (defining pages and zones, validating data before export)

- Enhanced control of the output formats
- Enhanced PDF creation features
- Support for OCR of image PDF files
- Image management features such as de-skew and despeckle
- Creation of interlaced PDF files (better for web viewing)
- Support for up to 8 processors on one system (additional licenses required)

Professional Barcode

- Faster and more accurate recognition
- Supports more barcode types
- Comprehensive zonal recognition of barcodes
- Comprehensive validation of recognized information

Workflow Tracker

- Allows storing document routing and processing in any ODBC database for reporting and cost accounting integration
- All document workflow parameters can be used for cost reporting, recovery and auditing

Minimum System Requirements

Processor: Intel® Pentium®/Celeron®/Xeon™, AMD K6/Athlon™/Duron™/Sempron™ or compatible processor 500 MHz or higher

Operating System: Microsoft® Windows® Server 2003, Windows XP, Windows 2000

Memory: 128 MB of RAM required; 256 MB or more recommended

Hard-disk Space: 1 GB of hard-disk space for typical installation and program operation

Display: SVGA (800x600 or higher-resolution) video adapter and monitor

Other : Keyboard, mouse or other pointing device
Ethernet network interface card